



Schuylkill United Way

Helping Other People Everyday

9 North Centre Street, Suite 301
Pottsville, PA 17901
Phone: 570.622.6421

Schuylkill News of H.O.P.E.

2023 3rd Quarter Newsletter



2,200 backpacks filled with school supplies this year!

All the details inside!

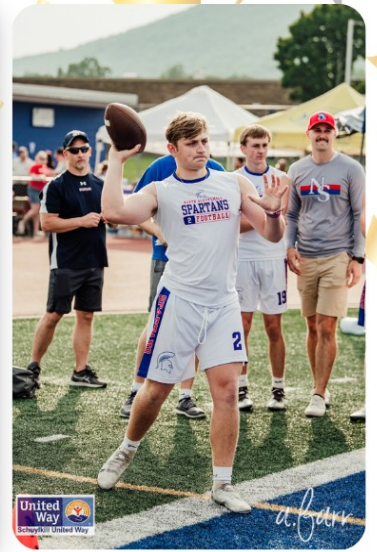


a. barr
PHOTOGRAPHY

Our third quarter Schuylkill News of H.O.P.E. is proudly sponsored by Lehigh Valley Hospital—Schuylkill.



**CONGRATULATIONS TO THE 2023 CHAMPIONS
THE NORTH SCHUYLKILL SPARTANS !!**



Shuttle Relay



Blue Mountain



Minersville



Nativity BVM

Overall *Speed & Agility* Winners

1. Blue Mountain
2. North Schuylkill
3. Nativity BVM

Farmers Carry



Blue Mountain



North Schuylkill



Marian Catholic

Broad Jump



Blue Mountain



Minersville



North Schuylkill



6th Annual
High School Football Challenge



a.farr



a.farr

Tire Flip



North Schuylkill



Blue Mountain



Schuylkill Haven

Overall *Strength* Winners

1. North Schuylkill
2. Blue Mountain
3. Schuylkill Haven

Sled Push



Marian Catholic



North Schuylkill



Williams Valley

Bench Press



Schuylkill Haven



North Schuylkill



Blue Mountain



6th Annual
High School Football Challenge



a.farr



OVERALL CHAMPIONS



North Schuylkill



Blue Mountain



Nativity BVM

On Tuesday, June 20 we held our 6th Annual High School Football Challenge at North Schuylkill High School Ghosh Orthodontics Field at Spartan Stadium. Over 1,300 fans were on hand to cheer for their team!

We were thrilled to again have all 14 Schuylkill County high school teams competing! They battled through seven competitions that tested their strength, speed, agility, and passing accuracy.

Congratulations to the overall winner - the **North Schuylkill Spartans**! The **Blue Mountain Eagles** finished in second, and the **Green Wave of Nativity** placed for the first-time with the number three spot.

It was a great night of community as attendees got to visit with our Partner Agencies, sponsors, and visit the various food trucks. A record \$28,800 was raised that night through corporate sponsorships and donations! These funds will go to support the Nurse's Pantry, Stuff the Bus and other student initiatives.

Special thanks to our official photographer, *Ashley Farr* of A.Farr Photography for generously giving her time and talent. The pictures are phenomenal!

Thank you to our event sponsor:

John E. Morgan Foundation

Thank you to our corporate sponsors

- Ashley Furniture
- Helping Harvest
- Hydro
- J. Bertolet Volkswagen
- Knights of Columbus
- Lehigh Valley Hospital - Schuylkill
- Lowe's RDC 961
- M&T Bank
- M.J. Electric
- Mauch Chunk Trust Company
- Mrs. T's Pierogies
- PPL
- Schuylkill Chapter #25 - National Football Hall of Fame
- St. Luke's Miners / Geisinger St. Luke's Hospital
- Tompkins Community Bank
- WalMart D.C. #7030
- Wegmans

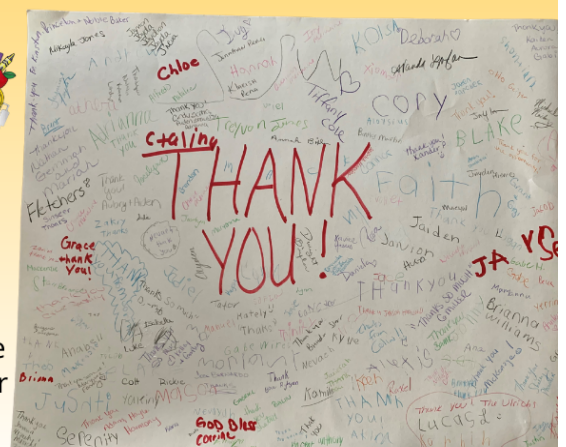
The Nurse's Pantry is an occasion to show a young person that you care.



Schuylkill County School Nurse



Students who picked up bookbags from the Salvation Army - Pottsville Corps send their thanks!





Passing Accuracy Winners



Mahanoy Area



North Schuylkill



Blue Mountain

SAVE THE DATE FOR THE 7th
HIGH SCHOOL FOOTBALL CHALLENGE
JUNE 18, 2024





What are the backpacks stuffed with?

Crayons

Pencils (donated by **Mid-Penn Bank, Milton Hershey School, & UGI**)

Pens

Dry erase markers

Erasers

Folders

Notebooks

Colored pencils

Glue sticks

Pencil pouches

Scissors

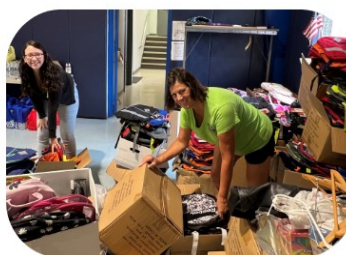
Highlighters

Hand sanitizer (donated by **Geisinger St. Luke's Hospital & St. Luke's Miners Campus**)

Tissues (donated by **Lehigh Valley Health Network**)

One miscellaneous item

We thank **Wegmans** for donating a variety of these supplies!



Special thanks goes out to:

- **Lehigh Valley Health Network** for donating 120 backpacks and supplies!
- **Mrs. T's Pierogies** for donating 50 Staples pre-packaged supply boxes
- **Honeywell** for their donation of 26 backpacks and supplies
- **Jersey Mike's Subs** for not only volunteering to stuff the backpacks but also providing lunch for all the volunteers!

We greatly appreciate the financial support to offset program costs for Stuff the Bus from:

- **PPL**
- **Boyer's Food Markets**
- **The Evans Network of Companies, Inc**
- **The Benevolent Association**
- **Mauch Chunk Trust Company**
- **Frackville Senior Center**
- **Anonymous individual donors contributed a total of \$475.**

Special thanks to BG's Value Markets and Beer Shak on 183 for again selling icons!

We thank the following locations for serving as Stuff the Bus public drop off locations:

- Ashland Public Library
- Orwigsburg Public Library
- Pottsville Public Library
- Schuylkill Haven Public Library
- Boyer's Food Market (Frackville, Orwigsburg, Tamaqua)
- Cake Pros
- First Citizens Community Bank (Schuylkill Haven & Friedensburg)
- Geisinger St. Luke's Hospital
- Hidden River Credit Union (Hometown, Orwigsburg, Pottsville)
- Hope & Coffee
- J. Bertolet Volkswagen
- Mauch Chunk Trust Company
- Mother Bear's Candy
- Mid Penn Bank (Cressona, Minersville, Orwigsburg, Pottsville)
- Northeast Edge Assoc.
- Pine Grove Pharmacy
- The Primary Health Network
- Republican Herald
- Salvation Army - Pottsville Corps
- Schuylkill County Treasurer's Office
- Schuylkill YMCA

Several companies, churches, and organizations hosted internal drives among their employees. We thank you all:

- Amazon - Bethel, PA
- Access Services
- Eastern Schuylkill Democratic Club
- The Evans Network of Companies, Inc.
- Faith Reformed United Church of Christ
- Frackville Senior Center
- Hershey Foods
- Hexcel
- Honeywell
- Hydro
- Jeld-Wen
- Lehigh Valley Health Network
- MAE-Eitel, Inc.
- Providence Place (Pine Grove)
- Remax
- St. John's Church - Auburn
- St. Luke's Hospital - Miners Campus
- Service Access Management (SAM)
- Schuylkill IU #29
- Shalmet
- T.E. Connectivity
- Trinity Lutheran Church



WHY DO YOU SUPPORT SUW?

"The Nurse's Pantry is what got me. I've volunteered in schools for the past 15 years as well as coaching various youth sports. I've been able to see some of the students that need that little bit of extra and depend on programs like this. All the volunteers and help provided to those who are down on their luck and just need that little bit extra. Everyone involved seems very happy to help and be involved. I've always enjoyed donating my time. **I'm happy to be even the tiniest part of such a great variety of programs!"**

- Kelly Rakus,
SUW Board Member,
The Evans Network
of Companies, Inc.

"I have friends and family that have used many of the Partner Agencies involved in the Schuylkill United Way. I also have friends and family that work in these agencies. I have spoken with them and know the need for the services they provide. **Seeing the impact that is made through the Agencies and the stories of them restoring hope and faith in humanity makes it really easy to contribute as much as I can."**

- Garrin Leymeister,
Pacesetter,
Bob Weaver Auto

"Contributing to the Schuylkill United Way began for me when I started working for Union Bank & Trust Company in 1955. I've held a leadership position with SUW for over 25 years now. **Through all these years, I have become more and more aware of all the many ways the SUW and Partner Agencies serve the residents of our county.** These agencies would have financial difficulties serving the community without the Schuylkill United Way and all those who support annual giving."

- Naomi Morrow Ost,
SUW Board Member
Retired

John E. Morgan Foundation doubles your impact.

Pacesetters set the pace for our annual campaign by giving a minimum of \$500 annually. *\$10/week for one year.* That's what it takes to become a Pacesetter. That's what it takes to set the pace and provide stability for SUW and our Partner Agencies.

If you join the Pacesetters Club, John E. Morgan Foundation will match your gift!

Now your \$500 donation will become \$1,000!

If you're already a Pacesetter and increase your giving, John E. Morgan Foundation will double the increase. If your donation goes from \$500 to \$550, it is now a \$100 increase thanks to our friends at the John E. Morgan Foundation!

BE A PACESETTER - GET A PACESETTER!

Patrick Kane,
Pacesetters Club Chair



2024 Campaign Helping Other People Everyday



Schuylkill United Way

Grand Prize - 2023 Ford Escape

Courtesy of Sands Ford of Pottsville

All prizes
sponsored by
generous companies
listed!



**\$28,000
Value!**

Participating Sponsors: Bob Weaver Auto * J. Bertolet Volkswagen * Rinaldi Family Dealerships
* Williamson, Friedberg & Jones, LLC

DONATE TO WIN



\$500 IPAD



\$1,500 Gift Card \$1,000 Gift Card
\$750 Gift Card \$500 Gift Card
\$250 Gift Card

Hadesty's ACE

\$500 Weber Gas Grill



\$1,800 Ariens Snow Blower



\$1,600 Vacation Package

- \$2** For the price of one cup of coffee, you can help the community of Schuylkill County
- \$4** For the price of one energy drink, you can help the community of Schuylkill County
- \$5** For the price of buying lunch, you can help the community of Schuylkill County
- \$10** For the price of a small pizza, you can help the community of Schuylkill County

Welcome to the
Pacesetters Club!

Schuylkill United Way
2024 Campaign

Schuylkill United Way
2024 Campaign

Schuylkill United Way
2024 Campaign

Schuylkill United Way
2024 Campaign

Entry 1- All Prizes

A contribution of at least \$2 per week, or \$104 per year makes you eligible to fill out Entry 1.

Entry 2- All Prizes

A contribution of at least \$4 per week, or \$208 per year, makes you eligible to fill out Entry 1 and 2.

Entry 3- All Prizes

A contribution of at least \$5 per week, or \$260 per year, makes you eligible to fill out Entry 1, 2 and 3.

Entry 4- All Prizes

A contribution of at least \$10 per week, or \$520 per year, makes you eligible to fill out Entry 1, 2, 3 and 4.

Name _____

Employer _____

Telephone # _____

Helping Other People Everyday

SCHUYLKILL UNITED WAY
9 North Centre Street, Suite 301, Pottsville, PA 17901
Phone: 570.622.6421 Fax: 570.622.7424

Thank You!
2024

NAME (PRINT) _____ COMPANY _____

SIGNATURE _____ DATE _____

Choose Payment Option: **2024 Campaign — My total annual gift is** \$ _____

☐ Pay: Check/Cash \$ _____ (Payable to SUW) Pay Pal /Credit Card \$ _____ (Payable online @ www.schuylkillunitedway.org/Donate/Pay)

☐ Bill Me: ☐ One-time ☐ Monthly ☐ Quarterly ☐ Semi-Annually

Direct my pledge to the following agency _____

☐ Remain anonymous

Please send bill to the following ADDRESS:

**EASY PAYROLL
DEDUCTION:**

Pledge Per WEEK: ☐ \$10* ☐ \$5 ☐ \$4 ☐ \$2 Other ☐ \$ _____
*A gift of \$10 per week allows you to join the Pacesetters Club

**Don't
Forget!**

Pledge cards must
be returned to the
SUW office by
NOON on
Thursday,
November 9th
to be eligible for
one of the
donated
campaign prizes!

Winners will be
drawn at our
Appreciation
Breakfast on
Friday,
November 10th!



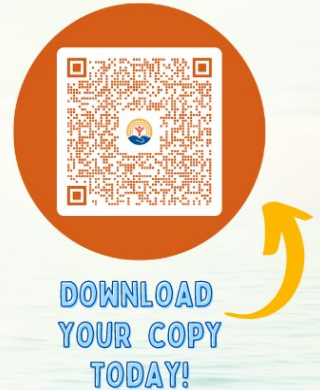
SUW SUMMER HAPPENINGS !



Get your copy today!

Our 2022 Impact & 2023 Campaign report contains all of our program highlights, campaign events, financial statement, Partner Agency directory, and more!

See your support in action in so many ways. Share it with friends and family. Contact the SUW office if you have questions or would like a hard copy - (570) 622-6421 or maloneexdir@schuylkillunitedway.org.



CONGRATULATIONS

On June 6, our Marketing Director Becky Woods successfully completed Schuylkill Leadership!

This robust 10-week program has been run by the Schuylkill Chamber of Commerce for over 25 years. In addition to guest speakers, participants tour local businesses, tourism attractions, and non-profits while learning about our history, government, and more.

United Way is proud to sponsor this:

Collaborative Grant Writing Workshop

Special focus on ALICE data and CAAP Needs Assessment!

Thursday, June 15
10am - 3pm

23 Meadowbrook Center
23 Meadowbrook Dr.
Schuylkill Haven, PA 17972

Register online!

\$100 / Organization includes:
lunch, snacks, and an INTERACTIVE workshop!
*Whether your organization sends one, two, or three people, the cost is still only \$100!

Bring your laptop!
This is an interactive workshop and you will be doing real-time data searches and other research.

Want more info?
Contact Christine:
(570) 622-6421
dircomrel@schuylkillunitedway.org

This workshop was designed and is being presented by:

At the request of our Partner Agencies, SUW was proud to work with the Pennsylvania Assoc. of Non-Profits (PANO) and Community Action Association of Pennsylvania (CAAP) to bring the Collaborative Grant Writing Workshop to our area on June 15. This was an awesome opportunity to network, learn how to find the right ingredients for grants, and how to foster quality partnerships to be successful.



Registration

Contact Charles Ladd, IV or
Chris Cohoon to register.

Charles Ladd, IV
Phone: (570) 762-6781
Email: laddcc4@verizon.net

Chris Cohoon
Phone: (719) 252-0571
Email:
cohoonce@airproducts.com

Send list of pairs or
foursomes, or you will be
assigned to a team.

\$75 per golfer

Price includes: driving
range, greens fee, golf cart,
lunch, dinner, beer, and
drinks on the course.

Checks can be made
payable to "SUW
Hometown Golf
Tournament" and sent to:
Attn: Charles Ladd, IV
11 Mountainwood Drive,
Mountaintop, PA 18707

Nearby Lodging

Comfort Inn & Suites
1252 Morea Rd.
Barnesville, PA
(570) 773-5252

Dress Code

No cut-offs or tank tops.
Soft spikes only.



All details at:

www.schuylkillunitedway.org

18th Annual SUW-HOMETOWN

FALL GOLF OUTING

SEPT. 29, 2023 | NOON

SCRAMBLE FORMAT (8" CUP)

MOUNTAIN VALLEY GOLF COURSE

1021 Brockton Mountain Dr.
Brockton, PA 18214





Schuylkill United Way

9 North Centre Street, Suite 301

Pottsville, PA 17901

Change Service Requested

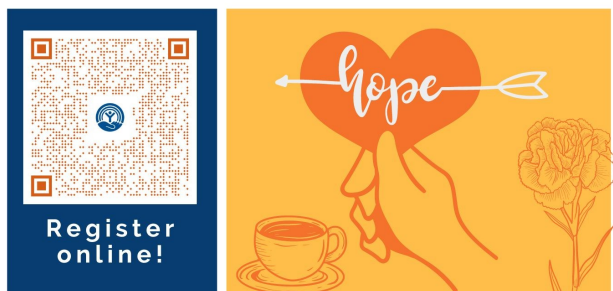
NON PROFIT

US POSTAGE

PAID

POTTSVILLE PA

PERMIT NO. 430



Need to hear some news of H.O.P.E.?

Need a little inspiration?

Join us for our 2024 Kick Off Breakfast!

- ◇ Hear first-hand the good things happening in our area
- ◇ Network with our Partner Agencies and community leaders
- ◇ Learn how you can get involved

RSVP by Friday, September 1.

